

EKIP COMPANY CATALOG

 **EKIP**



For more information;

[www.ekipenerji.com.tr](http://www.ekipenerji.com.tr)

Our strength  
comes from  
the **Ekip...**



## About Us

EKIP CONSTRUCTION ENERGY ELECTRIC MECHANICAL INDUSTRY AND TRADE LTD. STİ. Established in Istanbul in 2005, it is one of the experienced Turkish Contracting companies that has successfully completed Public and Private contracts in Turkey and abroad. It has completed all the contracts it has undertaken in the construction sector on time and with success above the standards, with its own construction machinery, tools and equipment, and experienced and superior technical staff.

It is a company that prepares reliable construction and contracting works in accordance with the standards in its field of expertise in line with the demands from corporate and individual customers. Among its references, the road, intersection, tunnel, underpass and overpass, bridge, building construction, waste water, dam etc. projects such as.

Our biggest goal is to maintain our position in the sector by realizing projects that require superior engineering in the field and location in which we operate. Our company, which sets out from the principle that people are the most important resource; It continues to grow steadily, without compromising its honesty and reliability, within the understanding of a family that is interlocked with all its employees. We act with the awareness and responsibility that every job we do is a reference for the next job to be done.

**EKIP INSAAT ENERJİ** gives the assurance that it will successfully complete the projects it will do from now on, with the self-confidence and pride of achieving 100% success in the projects it has done so far in line with the targets it has set.

Our goals in the field of occupational health, safety and environmental policy; It is shaped as "to ensure continuous improvement in the environment and health/safety system by taking the necessary measures for the environment and human health".

With our strong and constantly renewed machine park, our projects are carried out uninterruptedly and rapidly. Our goal is to strengthen our position in the sector by giving life to the work and investments of our company in the coming years.

For more information;



[www.ekipenerji.com.tr](http://www.ekipenerji.com.tr)



**We continue on our way with the vision of being a successful and sought after company in its sector.**



## Our Vision

- ✔ To be a successful and sought-after leader company in its sector.
- ✔ To develop in accordance with the high quality and standards we have determined.
- ✔ To fully implement the Health-Safety-Environment facts. Planning for the future from today and a determined walk on this path.

## Our Mission

- ✔ Being sensitive to Rules and Regulations, Law and Environment, applying ISO 9001:2008 Quality Management System
- ✔ To work to improve our product quality and capabilities and to contribute to the development of our country.

## Our Quality Policy

- ✔ Achieving goals supported by all our employees
- ✔ To work for quality without any hesitation.
- ✔ Complete Customer Satisfaction,
- ✔ Happiness of all employees,
- ✔ Establishing reliable relationships with suppliers
- ✔ The happiness of our business partners

For more information;



[www.ekipenerji.com.tr](http://www.ekipenerji.com.tr)

## Health – Education – Our Environmental Policy

It is to prevent harm to the environment and people by taking all kinds of measures related to the environment and business life, to eliminate accidents and not to harm the environment.

- ✔ None of our employees will work under inappropriate conditions and with insufficient measures.
- ✔ We will use energy efficiently to protect nature in the best possible way.
- ✔ We will prevent harm to the environment by controlling our domestic and industrial wastes well. We will ensure that it is evaluated in appropriate places.
- ✔ We will ensure that adequate training is given to our employees on the job and afterwards. We will try to create healthy and safe environments by making periodic checks of our work areas and our employees.
- ✔ All of our employees are responsible for Health-Education-Environment and are obliged to show the necessary sensitivity.



## Our References

---

THE ISTANBUL METROPOLITAN MUNICIPALITY

KIPTAS A.Ş. (İSTANBUL HOUSING ZONING PLAN SAN. TİC. A.Ş.)

BÜYÜKÇEKMECE MUNICIPALITY

ESENLER MUNICIPALITY

REPUBLIC OF TURKEY PRIME MINISTRY MASS HOUSING ADMINISTRATION

YEŞİL CONSTRUCTION

TIKA ( TURKISH COOPERATION AND COORDINATION AGENCY )

KGM ( GENERAL DIRECTORATE OF HIGHWAYS)

BEYLİKDUZU MUNICIPALITY

UMRANIYE MUNICIPALITY

TURKİSH KIZILAY

ISKI ( GENERAL DIRECTORATE OF ISTANBUL WATER AND SEWAGE ADMINISTRATION )

ISTON ( ISTANBUL CONCRETE ELEMENTS AND READY CONCRETE FACTORIES A.Ş.)

ISFALT ( ISTANBUL ASPHALT FACTORIES INDUSTRY AND TRADE A.Ş.)

IGDAS ( ISTANBUL GAS AND NATURAL GAZ DISTRIBUTION A.Ş. )

REPUBLIC OF TURKEY MINISTRY OF FOREIGN AFFAIRS

ALBAYRAK GROUP OF COMPANIES

GOVERNOR OF NAJAF / IRAQ

BAGDAT PROVINCE BRIDGES AND ROADS ADMINISTRATION / IRAQ

DAHABSHIIL BANK / SOMALIA

## Our Business and Service Areas

---

- 1 Construction works
- 2 Office And Housing Projects
- 3 Education and Religious Buildings
- 4 Energy Production Facilities
- 5 Treatment Plants
- 6 Hospitals
- 7 Road and Asphalt Construction
- 8 Bridge
- 9 Irrigation Channels
- 10 Sewage
- 11 Infrastructure and Superstructure
- 12 Restoration
- 13 Offices & Hotels
- 14 Industrial Buildings
- 15 Electrical Engineering Consultancy Services
- 16 Electrical Engineering Project Services
- 17 Automation and Fire Systems
- 18 Base Stations
- 19 Grounding Facilities
- 20 Heating, Ventilation and Air Conditioning Installation

## Energy and Electromechanical Assembly Works

Yalova Başkent Cons. A.Ş. 1-2-3 sites electrical works 650 flats

Kayseri Özden Cons. A.Ş. Cooperative buildings 210 flats

Moscow Mir A.Ş Park Palace Office and residential projects

Moscow EMT.A.S. Gubkina Office and residential project

EMT. Inc. World Trade Center IDTM EGS Blocks Istanbul

Kazakhstan ENTES Copper Factory

SATES Inc. Gebze TUBITAK Electrical And Mechanical Assembly

AK ENERGY INC. DENIZLI Gas Turbine 15 mw

AK ENERGY INC. USAK Gas Turbine 15 mw

AK ENERGY INC. BURSA/GURSU Gas Turbine 15 mw

Kazakhstan ENKA MV Switchgear Installation

BOSEN ENERJİ ÜRETİM A.Ş.154 Transformer And Switchgear Installation. ( Bursa )

BOSEN ENERGY PRODUCTION INC. MV-LV Switchgear And Panel Assembly. ( Bursa )

AKSA AKRILIK GIS Installation.( Yalova )

AKSA AKRILIK MV Cubicle Assembly Testing And Commissioning. ( Yalova )

AKSA AKRILIK AG Panel Assemblies Testing And Commissioning. ( Yalova )

ISKI Various Energy Transmission Line and Transformer Assemblies

ISKI Control and Control Panels Assemblies

## Our machine park

NUMBER	MACHINE TYPE	BRAND	MODEL / CAPACITY	QUANTITY
1	CRUSHER	NACE	110 TON/HOUR	1
2	ASPHALT PLANT	MARİNİ	250 TON/HOUR	1
3	CONCRETE PLANT	Pİ MAKİNA	80 M3/HOUR	1
4	TRANSMIXER	MERCEDES 4140	12 M3	4
5	MOBILE CONCRETE PUMP	SCHWING-S36SX	36 M	1
6	GRADER	CATERPILLAR 140H	185 HP	1
7	GRADER	CATERPILLAR 160H	200 HP	1
8	BULLDOZER	CATTERPILLAR D8T	400 HP	1
9	LOADER	CATTERPILLAR 966H	3,5 M3	2
10	EXCAVATOR	CATTERPILLAR 330 PALETLİ	2,8 M3	1
11	EXCAVATOR	CATTERPILLAR M316 LASTİKLİ	1,6 M3	1
12	EXCAVATOR	VOLVO EC360C PALETLİ	3,0 M3	1
13	FINISHER	VOGELE 1900-3	240 TON/HOUR	1
14	FINISHER	VOGELE 2100-2	300 TON/HOUR	1
15	ENGRAVING MACHINE	WIRTGEN-ASFALT KAZIMA W200	250 TON/HOUR	1
16	CYLINDER	BOMAG 217D-2	VIBRATION	2
17	CYLINDER	BOMAG BW202	TANDEM	3
18	CYLINDER	BOMAG BW24	PNEUMATIC	2
19	PIERCING	TAMROCK DX700	PIERCING	1
20	PIERCING	ATLAS COPCO	COMPRESSOR	1
21	DUMP TRUCK	MERCEDES 3340	20 M3	6
22	DUMP TRUCK	MERCEDES 4140	24 M3	4
23	TRACTOR	MERCEDES 3341	300 HP	1
24	WATER TANK	RÖMORK	26 TON	1
25	LOW BED		50-75 TON	1
26	ASPHALT DISTRIBUTOR	FARGO26.235	14 TON	1
27	CRANE	IVECO 380.42	50 TON	1
28	MAINTENANCE TROLLEY	FARGO AS950		2
29	WATER TANK	FARGO AS951		2
30	FUEL TANKER		8-20 TON	2
31	VAN			5
32	MINIBUS			4
33	TOWER CRANE	POTAIN	10 TON / 60 M	1
34	TOWER CRANE	SOIMA	8 TON / 60 M	1



# OUR VARIOUS BUILDING WORKS AND REFERENCES



For more information;

[www.ekipenerji.com.tr](http://www.ekipenerji.com.tr)

**KIPTAŞ DOLAYOBA GYM HALL  
CONSTRUCTION FOR 500 PEOPLE**



**ADMINISTRATION :**

KİPTAŞ A.Ş.

**CONTRACTOR :**

ÖZKA İNŞAAT A.Ş.

**SUBCONTRACTOR :**

EKİP İNŞAAT ENERJİ ELEKTRİK MEK. SAN. TİC. LTD. ŞTİ.

**CONTRACT PRICE :**

450.000 TL

**TOTAL PROGRESS PAYMENT :**

492.000 TL

**WORK START DATE :**

01.05.2006

**WORK FINISH DATE :**

31.07.2007

KIPTAŞ DOLAYOBA GYM HALL  
CONSTRUCTION FOR 500 PEOPLE



**KIPTAŞ TUZLA ŞİFA NEIGHBORHOOD  
HILAL MASS HOUSING 576 pcs. 75 m<sup>2</sup>  
TURNKEY + 192 pcs. 95 m<sup>2</sup> ROUGH  
CONSTRUCTION CONSTRUCTION**



**ADMINISTRATION :**

KİPTAŞ A.Ş.

**CONTRACTOR :**

BEMA İNŞAAT SAN.TİC. LTD.ŞTİ

**SUBCONTRACTOR :**

EKİP İNŞAAT ENERJİ ELEKTRİK MEK. SAN. TİC. LTD. ŞTİ.

**CONTRACT PRICE :**

14.545.000 + KDV

**TOTAL PROGRESS PAYMENT :**

15.645.000 + KDV

**WORK START DATE :**

18.04.2006

**WORK FINISH DATE :**

30.10.2007



For more information;  
[www.ekipenerji.com.tr](http://www.ekipenerji.com.tr)

KIPTAŞ TUZLA ŞİFA NEIGHBORHOOD  
HILAL MASS HOUSING



**KİPTAŞ TUZLA MİMAR SİNAN  
NEIGHBORHOOD HILAL MASS  
HOUSING 528 UNITS 75 m<sup>2</sup> Rough  
CONSTRUCTION TUNNEL MOLD  
CONSTRUCTION**



**ADMINISTRATION :**

KİPTAŞ A.Ş.

**CONTRACTOR :**

DEMARS İNŞAAT SAN.TİC.LTD.ŞTİ

**SUBCONTRACTOR :**

EKİP İNŞAAT ENERJİ ELEKTRİK MEK. SAN. TİC. LTD. ŞTİ.

**CONTRACT PRICE :**

1.250.000 + KDV

**TOTAL PROGRESS PAYMENT :**

1.325.000 + KDV

**WORK START DATE :**

26.04.2006

**WORK FINISH DATE :**

28.08.2007

**KİPTAŞ TUZLA MİMAR SİNAN  
NEIGHBORHOOD HILAL MASS  
HOUSING**



For more information;



[www.ekipenerji.com.tr](http://www.ekipenerji.com.tr)

**KIPTAŞ ARNAVUTKÖY BAŞAK MASS  
HOUSING 285 UNITS 75 M<sup>2</sup> + 56  
UNITS 150 M<sup>2</sup> TURNKEY  
CONSTRUCTION WORK**



**ADMINISTRATION :**

KİPTAŞ A.Ş.

**CONTRACTOR :**

YÜZBAŞIOĞLU İNŞAAT SAN. TAAHHÜT TİC. LTD. ŞTİ.

**SUBCONTRACTOR :**

EKİP İNŞAAT ENERJİ ELEKTRİK MEK. SAN. TİC. LTD. ŞTİ.

**CONTRACT PRICE :**

12.769.000 TL + KDV

**TOTAL PROGRESS PAYMENT :**

12.769.000 TL + KDV

**WORK START DATE :**

16.05.2007

**WORK FINISH DATE :**

31.11.2009

**KIPTAŞ ARNAVUTKÖY  
BAŞAK MASS HOUSING**



For more information;



[www.ekipenerji.com.tr](http://www.ekipenerji.com.tr)

**ISKI TERKOS CLEAR WATER  
TREATMENT PLANT**



**ADMINISTRATION :**

İski

**CONTRACTOR :**

HAMLE İNŞAAT A.Ş.

**SUBCONTRACTOR :**

EKİP İNŞAAT ENERJİ ELEKTRİK MEK. SAN. TİC. LTD. ŞTİ.

**CONTRACT PRICE :**

1.750.000 TL + KDV

**TOTAL PROGRESS PAYMENT :**

1.750.000 TL + KDV

**WORK START DATE :**

06.08.2007

**WORK FINISH DATE :**

31.12.2007



For more information;  
[www.ekipenerji.com.tr](http://www.ekipenerji.com.tr)

**ISKI TERKOS CLEAR WATER  
TREATMENT PLANT**



**KIPTAŞ KAYABAŞI MASS HOUSING 3  
BLOCKS 180 UNITS 115 m<sup>2</sup> FLAT  
ROUGH CONSTRUCTION TUNNEL  
MOLD CONSTRUCTION**



**ADMINISTRATION :**

KİPTAŞ A.Ş.

**CONTRACTOR :**

UZUNLAR İNŞAAT SAN. VE TİC. A.Ş.

**SUBCONTRACTOR :**

EKİP İNŞAAT ENERJİ ELEKTRİK MEK. SAN. TİC. LTD. ŞTİ.

**CONTRACT PRICE :**

1.200.000 + KDV

**TOTAL PROGRESS PAYMENT :**

1.200.000 + KDV

**WORK START DATE :**

03.03.2008

**WORK FINISH DATE :**

31.12.2008



For more information;  
[www.ekipenerji.com.tr](http://www.ekipenerji.com.tr)

**KIPTAŞ KAYABAŞI MASS HOUSING**



**KIPTAŞ BÜYÜKÇEKMECE-TEPECİK  
MASS HOUSINGS 3 BLOCKS 180  
UNITS 115 m<sup>2</sup> FLAT Rough  
CONSTRUCTION TUNNEL MOLD  
CONSTRUCTION WORK**



**ADMINISTRATION :**

KİPTAŞ A.Ş.

**CONTRACTOR :**

İSTANBUL TEKNİK ARI İNŞAAT SAN. VE TİC. LTD. ŞTİ

**SUBCONTRACTOR :**

EKİP İNŞAAT ENERJİ ELEKTRİK MEK. SAN. TİC. LTD. ŞTİ.

**CONTRACT PRICE :**

600.000 + KDV

**TOTAL PROGRESS PAYMENT :**

600.000 + KDV

**WORK START DATE :**

10.04.2008

**WORK FINISH DATE :**

17.05.2009



**KIPTAŞ BÜYÜKÇEKMECE-TEPECİK MASS HOUSINGS 3  
BLOCKS 180 UNITS 115 m<sup>2</sup> FLAT Rough  
CONSTRUCTION TUNNEL MOLD CONSTRUCTION  
WORK**

**YEŞİL CONSTRUCTION ESENYURT  
INNOVIA PHASE-1 B4-B5 BLOCKS 360  
FLATS TURNKEY CONSTRUCTION WORK**

**INNOVIA**

**ADMINISTRATION :**

YEŞİL İNŞAAT YAPI DÜZENLEME VE PAZARLAMA TİC. A.Ş.

**CONTRACTOR :**

ÜMİT MÜH. ELEK. ELEKTR. SAN. LTD. ŞTİ.

**SUBCONTRACTOR :**

EKİP İNŞAAT ENERJİ ELEKTRİK MEK. SAN. TİC. LTD. ŞTİ.

**CONTRACT PRICE :**

23.250.000 + KDV

**TOTAL PROGRESS PAYMENT :**

23.250.000 + KDV

**WORK START DATE :**

24.06.2008

**WORK FINISH DATE :**

30.08.2009



For more information;

[www.ekipenerji.com.tr](http://www.ekipenerji.com.tr)

**YEŞİL CONSTRUCTION ESENYURT  
INNOVIA PHASE-1 B4-B5 BLOCKS 360 FLATS  
TURNKEY CONSTRUCTION WORK**



**YEŞİL CONSTRUCTION ESENYURT  
INNOVIA PHASE-1 B4-B5 BLOCKS 360 FLATS  
TURNKEY CONSTRUCTION WORK**



**BEYAŞ – BEYLİKDÜZÜ MASS HOUSING  
160 UNITS 99 m<sup>2</sup> + 40 UNITS 130 m<sup>2</sup>  
FLATS TURNKEY CONSTRUCTION  
WORK**



**ADMINISTRATION :**

BEYAŞ YATIRIM SAĞLIK TURZA.Ş.

**CONTRACTOR :**

SİMETRİ YAPI İNŞAAT RESTORASYON TURİZM SAN. VE TİC. LTD. ŞTİ.

**SUBCONTRACTOR :**

EKİP İNŞAAT ENERJİ ELEKTRİK MEK. SAN. TİC. LTD. ŞTİ.

**CONTRACT PRICE :**

15.196.000 + KDV

**TOTAL PROGRESS PAYMENT :**

15.196.000 + KDV

**WORK START DATE :**

20.06.2008

**WORK FINISH DATE :**

20.08.2010

BEYAŞ - BEYLİKDÜZÜ MASS HOUSING



KIPTAŞ SILIVRI 2nd PHASE 2nd REGION BAŞAK MASS  
HOUSING AND INFRASTRUCTURE AND LANDSCAPING  
WORKS 8 BLOCK 480 UNITS 75 m<sup>2</sup> FLATS TURNKEY CON-  
STRUCTION WORK



**ADMINISTRATION :**

KİPTAŞ A.Ş.

**CONTRACTOR :**

MİM RESTORASYON SANAYİ VE TİCARET A.Ş.

**SUBCONTRACTOR :**

EKİP İNŞAAT ENERJİ ELEKTRİK MEK. SAN. TİC. LTD. ŞTİ.

**CONTRACT PRICE :**

24.500.000 + KDV

**TOTAL PROGRESS PAYMENT :**

24.500.000 + KDV

**WORK START DATE :**

14.05.2008

**WORK FINISH DATE :**

19..11.2010

**KIPTAŞ SILIVRI 2nd PHASE 2nd REGION  
BAŞAK MASS HOUSING AND  
INFRASTRUCTURE AND LANDSCAPING  
WORKS 8 BLOCK 480 UNITS 75 m<sup>2</sup> FLATS  
TURNKEY CONSTRUCTION WORK**



For more information;



[www.ekipenerji.com.tr](http://www.ekipenerji.com.tr)



**KIPTAŞ SILIVRI 2nd PHASE 2nd REGION BAŞAK MASS  
HOUSING AND INFRASTRUCTURE AND LANDSCAPING  
WORKS 8 BLOCK 480 UNITS 75 m<sup>2</sup> FLATS TURKEY  
CONSTRUCTION WORK**

For more information;  
 [www.ekipenerji.com.tr](http://www.ekipenerji.com.tr)



**KIPTAŞ SILIVRI 2nd PHASE 2nd REGION BAŞAK MASS  
HOUSING AND INFRASTRUCTURE AND LANDSCAPING  
WORKS 8 BLOCK 480 UNITS 75 m<sup>2</sup> FLATS TURKEY  
CONSTRUCTION WORK**

For more information;  
[www.ekipenerji.com.tr](http://www.ekipenerji.com.tr)

S.S.İSTANBUL CLOTHING AND WHOLESALE WORKPLACE  
BUILDING COOPERATIVE MULTI-STOREY BUSINESS  
CENTER AND HOTEL FACILITIES WORKS



**ADMINISTRATION :**

S.S.İSTANBUL GİYİM KENT YAPI KOOPERATİFİ

**CONTRACTOR :**

MİM RESTORASYON SANAYİ VE TİCARET A.Ş.

**SUBCONTRACTOR :**

EKİP İNŞAAT ENERJİ ELEKTRİK MEK. SAN. TİC. LTD. ŞTİ.

**CONTRACT PRICE :**

405.000.000.000 TL + KDV

**TOTAL PROGRESS PAYMENT :**

405.000.000.000 TL + KDV

**WORK START DATE :**

15.06.1994 ve 25.08.1994

**WORK FINISH DATE :**

05.11.1999 ve 04.01.2001

**S.S.ISTANBUL CLOTHING AND WHOLESALE WORK-  
PLACE BUILDING COOPERATIVE MULTI-STOREY  
BUSINESS CENTER AND HOTEL FACILITIES WORKS**



For more information;



[www.ekipenerji.com.tr](http://www.ekipenerji.com.tr)

S.S.İSTANBUL CLOTHING AND WHOLESALE WORKPLACE  
BUILDING COOPERATIVE MULTI-STOREY BUSINESS  
CENTER AND HOTEL FACILITIES WORKS



**ADMINISTRATION :**

S.S.İSTANBUL GİYİMKENT YAPI KOOPERATİFİ

**CONTRACTOR :**

MİM RESTORASYON SANAYİ VE TİCARET A.Ş.

**SUBCONTRACTOR :**

EKİP İNŞAAT ENERJİ ELEKTRİK MEK. SAN. TİC. LTD. ŞTİ.

**CONTRACT PRICE :**

310.000.000.000 TL + KDV

**TOTAL PROGRESS PAYMENT :**

310.000.000.000 TL + KDV

**WORK START DATE :**

25.04.1996

**WORK FINISH DATE :**

25.05.2001

**S.S.ISTANBUL CLOTHING AND WHOLESALE WORK-  
PLACE BUILDING COOPERATIVE MULTI-STOREY  
BUSINESS CENTER AND HOTEL FACILITIES WORKS**



For more information;



[www.ekipenerji.com.tr](http://www.ekipenerji.com.tr)

# OUR OTHER MISCELLANEOUS WORKS



For more information;

[www.ekipenerji.com.tr](http://www.ekipenerji.com.tr)







**BAĞCILAR ANIMAL SHELTER**



**BÜYÜKÇEKMECE ASPHALT CONSTRUCTION WORK**



**BÜYÜKÇEKMECE ASPHALT CONSTRUCTION WORK**



**BÜYÜKÇEKMECE ASPHALT CONSTRUCTION WORK**



# VARIOUS ENERGY AND ELECTROMECHANICAL WORKS REFERENCES



For more information;

[www.ekipenerji.com.tr](http://www.ekipenerji.com.tr)

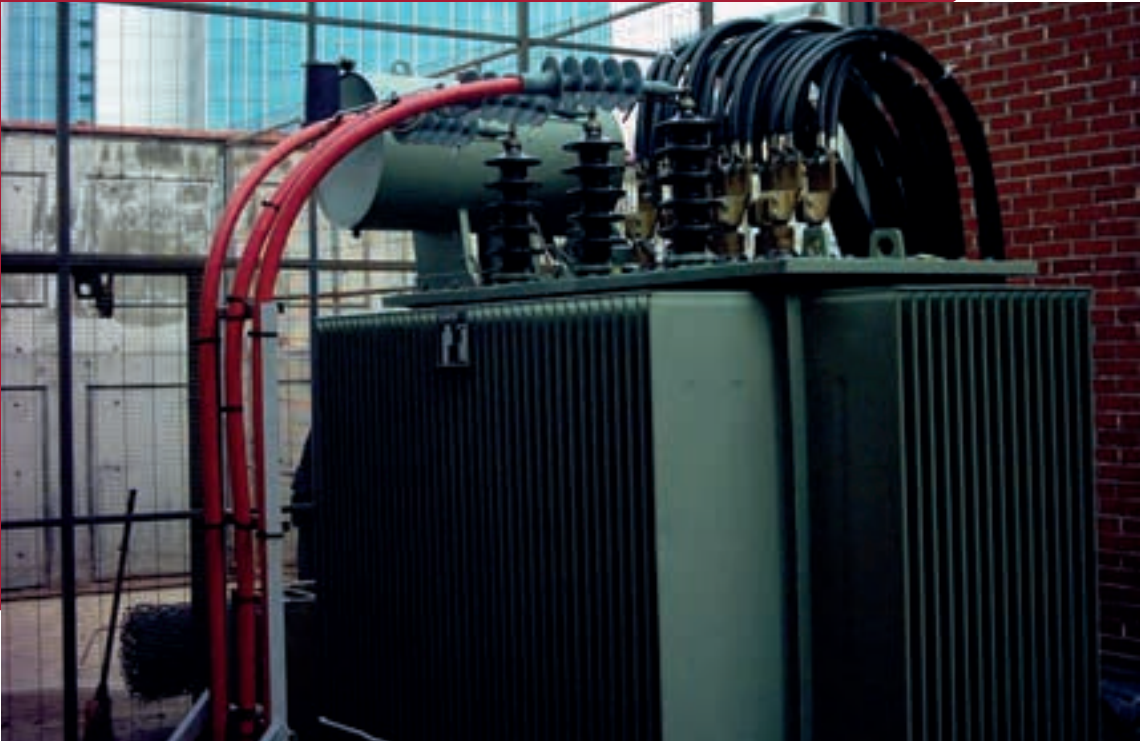
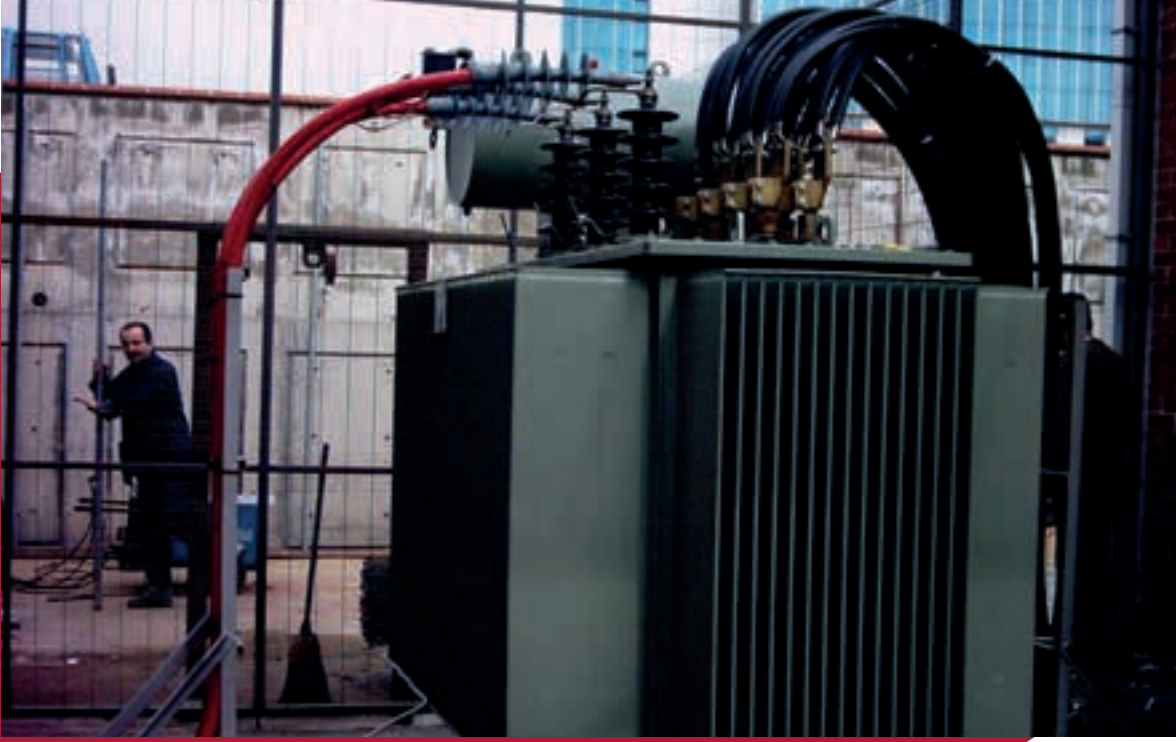
## HBB ENGINEERING 10.731,10 KWP GES PROJECT EPC

This project was built in Afyon / Turkey.  
Power Production Capacity 10.731.10 KWP.  
The installed power capacity is 10,350 kwe.  
Annual Electricity Production: 17,077,500,00 kWh



**VARIOUS O.G. TRANSFORMER AND O.G.  
CABLE ASSEMBLY WORKS**

**İSTANBUL**



For more information;  
[www.ekipenerji.com.tr](http://www.ekipenerji.com.tr)

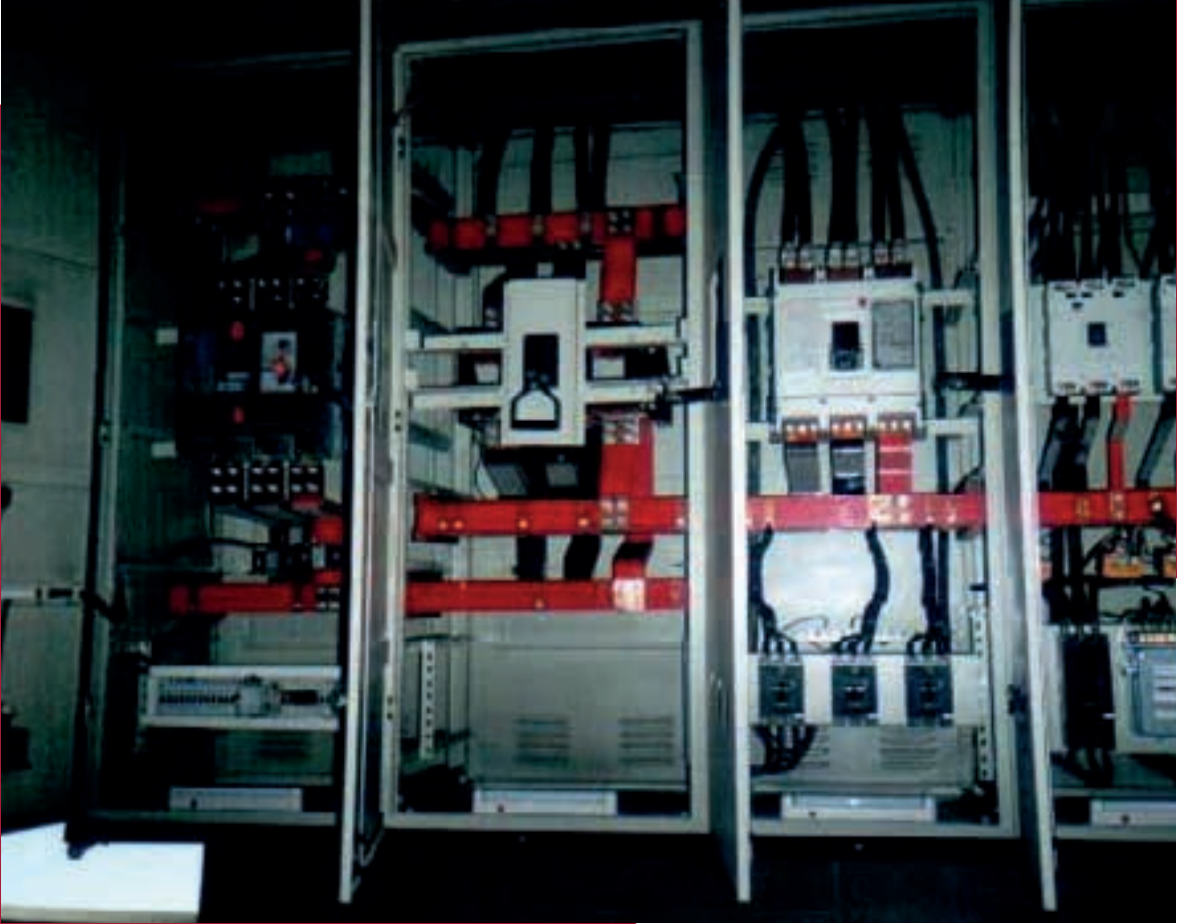
**VARIOUS O.G. TRANSFORMER AND O.G. CABLE ASSEMBLY WORKS**

**İSTANBUL**



VARIOUS PANEL MANUFACTURING  
AND ASSEMBLY

 İSTANBUL



**VARIOUS O.G. TRANSFORMER AND O.G.  
CABLE ASSEMBLY WORKS**

İSTANBUL



VARIOUS O.G.CABLE ASSEMBLY WORKS



VARIOUS HIGH VOLTAGE PANEL ASSEMBLIES



**VARIOUS HIGH VOLTAGE PANEL ASSEMBLIES**



**VARIOUS TRANSFORMER AND O.G.COMMISSIONING TESTS**



**VARIOUS HIGH VOLTAGE EXTERNAL  
CABLE HEAD ASSEMBLIES**



**VARIOUS HIGH VOLTAGE EXTERNAL  
CABLE HEAD ASSEMBLIES**



**VARIOUS HIGH VOLTAGE GAS INSULATED TRANSFORMER  
CENTER AND CABLE HEAD ASSEMBLIES**



**VARIOUS HIGH VOLTAGE GAS INSULA  
TEDTRANSFORMER CENTRAL CABLE TITLE ASSEMBLY**



VARIOUS HIGH VOLTAGE CABLE ASSEMBLIES



VARIOUS ROAD TUNNEL LIGHTING AND  
ELECTROMECHANICAL ASSEMBLIES



# OUR VARIOUS INVESTMENTS ABROAD



For more information;

[www.ekipenerji.com.tr](http://www.ekipenerji.com.tr)

## OUR SOMALIA MOGADISHU ASPHALT PLANT FACTORY

<b>ASPHALT PLANT - 65 TON/H CAPACITY</b>	<b>1 PCS</b>
<b>ASPHALT FINISHER - 180-240 TON/H CAPACITY</b>	<b>2 PCS</b>
<b>WHEELED VABIL</b>	<b>2 PCS</b>
<b>SOIL CYLINDER 20-25 TON CAPACITY</b>	<b>2 PCS</b>
<b>ASPHALT CYLINDER 15-25 TON CAPACITY</b>	<b>2 PCS</b>
<b>BEKO LOADER 3 TON / 1.5 M<sup>3</sup> CAPACITY</b>	<b>2 PCS</b>
<b>LOADER 2 M<sup>3</sup> CAPACITY</b>	<b>1 PCS</b>
<b>BITUMEN MELTING PLANT 6 TON/H CAPACITY</b>	<b>1 PCS</b>
<b>TRUCK 10 M<sup>2</sup> CAPACITY</b>	<b>6 PCS</b>
<b>GRADER</b>	<b>1 PCS</b>
<b>TRAILER</b>	<b>1 PCS</b>
<b>GENERATOR 500 KVA</b>	<b>1 PCS</b>

SOMALIA MOGIDOUZU ASPHALT PLANT



## OUR SOMALI MOGADISHU READY CONCRETE AND TA CRUSHING FACTORY

<b>MOBILE CONCRETE PLANT: 65 TON/H CAPACITY</b>	<b>1 PCS</b>
<b>TRANSMIXER 10 M<sup>3</sup> CAPACITY</b>	<b>9 PCS</b>
<b>LOADER 2 M<sup>2</sup> CAPACITY</b>	<b>1 PCS</b>
<b>MOBILE CONCRETE PUMP WITH 42 METERS BOTTOM 90 M<sup>3</sup>/H CAPACITY</b>	<b>1 PCS</b>
<b>MOBILE CONCRETE PUMP WITH 36 METERS BOOM 90 M<sup>3</sup>/H CAPACITY</b>	<b>1 PCS</b>
<b>TRUCK 10 M<sup>3</sup> CAPACITY</b>	<b>8 PCS</b>
<b>CRUSHER 150 TON/H CAPACITY</b>	<b>1 PCS</b>
<b>CRUSHER 50 TON/H CAPACITY</b>	<b>1 PCS</b>
<b>EXCAVATOR WITH 35 TON CAPACITY AND CRUSHER</b>	<b>5 PCS</b>
<b>GENERATOR 300 KVA</b>	<b>1 PCS</b>
<b>GENERATOR 550 KVA</b>	<b>2 PCS</b>
<b>TEST LABORATORY</b>	<b>1 PCS</b>

**SOMALIA MOGADISHU READY  
CONCRETE AND OUR FLOODING FACTORY**



SOMALIA - MOGADISHUCEMENT  
SILO 54 MT 12,000 M<sup>3</sup>



# OUR VARIOUS OVERSEAS CONTRACTING WORKS



For more information;

[www.ekipenerji.com.tr](http://www.ekipenerji.com.tr)

**SOMALI MOGADISHU VOCATIONAL HIGH  
SCHOOL OF NURSING WITH 40  
CLASSROOMS & 1.000 PEOPLE INDOOR AREA  
+ 1.000 PEOPLE OPEN AREA MOSQUE  
CONSTRUCTION WORK FOR A TOTAL 2.000  
PEOPLE**



**ADMINISTRATION :**

TOKİ

**CONTRACTOR :**

YANKI TURZ. İNŞ. İÇ. VE DIŞ TİC. LTD.ŞTİ. &  
METDEM SAĞLIK GEREÇLERİ LTD.ŞTİ. ORTAKLIĞI

**SUBCONTRACTOR :**

EKİP İNŞAAT ENERJİ ELEKTRİK MEK. SAN. TİC. LTD. ŞTİ.

**CONTRACT PRICE :**

20.000.000 \$ + KDV

**TOTAL PROGRESS PAYMENT :**

10.000.000 \$ + KDV

**WORK START DATE :**

30.10.2012

**WORK FINISH DATE :**

21.06.2014

**SOMALI MOGADISHU VOCATIONAL  
HIGH SCHOOL OF NURSING**



**1,000 PEOPLE CLOSED +  
1,000 PEOPLE OPEN TOTAL  
2,000 MOSQUE CONSTRUCTION  
CONSTRUCTION WORK**





**SOMALI MOGADISHU TURKISH  
EMBASSY CAMPUS CONSTRUCTION WORK**



**ADMINISTRATION :**

TC. DIŐIŐLERİ BAKANLIĐI

**CONTRACTOR :**

ALBAYRAK TURİZM SEYAHAT İNŐAAT SAN. VE TİC. A.Ő.

**SUBCONTRACTOR :**

EKİP İNŐAAT ENERĐİ ELEKTRİK MEK. SAN. TİC. LTD. ŐTİ.

**CONTRACT PRICE :**

5.932.000 \$ + KDV

**TOTAL PROGRESS PAYMENT :**

5.932.000 \$ + KDV

**WORK START DATE :**

31.01.2014

**WORK FINISH DATE :**

28.02.2016

**SOMALI MOGADISHU TURKISH  
EMBASSY CAMPUS CONSTRUCTION WORK**



For more information;



[www.ekipenerji.com.tr](http://www.ekipenerji.com.tr)

**SOMALIA MOGADISHU TURKISH  
EMBASSY CAMPUS AND BUILDING  
ROUGH CONSTRUCTION AND FINE  
MANUFACTURING WORKS**



**SOMALIA MOGADISHU TURKISH  
EMBASSY CAMPUS AND BUILDING  
ROUGH CONSTRUCTION AND FINE  
MANUFACTURING WORKS**



**SOMALIA MOGADISHU TURKISH KIZILAY  
HIGH SCHOOL CONSTRUCTION WORKS**



**ADMINISTRATION :**

TÜRK KIZILAYI

**CONTRACTOR :**

CEMRE İNŞAAT PLASTİK SAN. VE TİC. LTD. ŞTİ.

**SUBCONTRACTOR :**

EKİP İNŞAAT ENERJİ ELEKTRİK MEK. SAN. TİC. LTD. ŞTİ.

**CONTRACT PRICE :**

2.615.000 \$ + KDV

**TOTAL PROGRESS PAYMENT :**

2.500.000 \$ + KDV

**WORK START DATE :**

12.06.2014

**WORK FINISH DATE :**

19.02.2016

## SOMALIA MOGADISHU TURKISH KIZILAY HIGH SCHOOL CONSTRUCTION WORKS



**Somalia Mogadishu Turkish Embassy  
Campus and Building Coarse  
Construction and FINE Manufacturing  
Works**



**REHABILITATION OF CIBUTI BURHAN BEY  
AVENUE AND MARTYRS MEMORIAL**



**ADMINISTRATION :**

TÜRKİYE İŞBİRLİĞİ VE KOORDİNASYON AJANSI BAŞKANLIĞI (TİKA)

**CONTRACTOR :**

CEMRE İNŞAAT PLASTİK SAN.VE.TİC.LTD.ŞTİ.

**SUBCONTRACTOR :**

EKİP İNŞAAT ENERJİ ELEKTRİK MEK. SAN. TİC. LTD. ŞTİ.

**CONTRACT PRICE :**

1.315.000 \$ + KDV

**TOTAL PROGRESS PAYMENT :**

1.691.749,23 \$ + KDV

**WORK START DATE :**

10.07.2014

**WORK FINISH DATE :**

07.12.2015

CIBUTI



The background of the page is a photograph of several tall, modern apartment buildings with balconies, set against a clear blue sky. The image is partially obscured by large, diagonal, semi-transparent red and white geometric shapes that create a dynamic, layered effect.

**ONGOING OVERSEAS  
PROJECTS**

**AL – ZAHRA VIADUK PROJECT**

**ADMINISTRATION :**

NECEF VALİLİĞİ

**CONTRACTOR :**

NİM İNŞAAT ENERJİ MAKİNA GIDA SANAYİ DIŞ TİC. LTD. ŞTİ.

**SUBCONTRACTOR :**

EKİP İNŞAAT ENERJİ ELEKTRİK MEK. SAN. TİC. LTD. ŞTİ.

**CONTRACT PRICE :**

32.000.00 \$

**TOTAL PROGRESS PAYMENT :**

..

**WORK START DATE :**

16.01.2019

**WORK FINISH DATE :**

..



**IRAK / NECEF – ALZAHRA BRIDGE**



IRAQ / NECEF – ALZAHRA BRIDGE



IRAQ / NECEF – ALZAHRA BRIDGE



**IRAQ / NECEF – ALZAHRA BRIDGE**

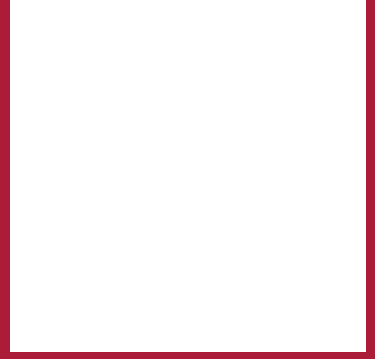








**BAGDAT – HILLE R4 HIGHWAY ROAD  
CONSTRUCTION REHABILITATION WORK**



**ADMINISTRATION :**

BAĞDAT VİLAYETİ KÖPRÜLER VE YOLLAR İDARESİ

**CONTRACTOR :**

NİM İNŞAAT ENERJİ MAKİNA GIDA SANAYİ DIŞ TİC. LTD. ŞTİ.

**SUBCONTRACTOR :**

EKİP İNŞAAT ENERJİ ELEKTRİK MEK. SAN. TİC. LTD. ŞTİ.

**CONTRACT PRICE :**

62.400.000 \$

**TOTAL PROGRESS PAYMENT :**

..

**WORK START DATE :**

15.10.2019

**WORK FINISH DATE :**

..



For more information;  
[www.ekipenerji.com.tr](http://www.ekipenerji.com.tr)

**BAGDAT - HILLE R4 HIGHWAY ROAD  
CONSTRUCTION REHABILITATION WORK**



**IRAQ/ BAGHDAD  
BAGHDAD-HILLE R4 HIGHWAY  
ROAD CONSTRUCTION WORK**



## SHANGANI BUILDING



**ADMINISTRATION :**

DAHABSHIIL REAL ESTATE

**CONTRACTOR :**

EKİP İNŞAAT ENERJİ ELEKTRİK MEK. SAN. TİC. LTD. ŞTİ.

**SUBCONTRACTOR :**

...

**CONTRACT PRICE :**

2.540.000 \$

**TOTAL PROGRESS PAYMENT :**

..

**WORK START DATE :**

..

**WORK FINISH DATE :**

..

MOGADISHU – SHANGANI



**MOGADISHU – SHANGANI**



For more information;



[www.ekipenerji.com.tr](http://www.ekipenerji.com.tr)

MOGADISHU – SHANGANI



**MOGADISHU – SHANGANI**



**MOGADISHU – SHANGANI**



**MOGADISHU – SHANGANI**



## DAHAB TOWER

**ADMINISTRATION :**

DAHABSHIIL REAL ESTATE

**CONTRACTOR :**

EKİP İNŞAAT ENERJİ ELEKTRİK MEK. SAN. TİC. LTD. ŞTİ.

**SUBCONTRACTOR :**

EKİP İNŞAAT ENERJİ ELEKTRİK MEK. SAN. TİC. LTD. ŞTİ.

**CONTRACT PRICE :**

50.000.000\$

**TOTAL PROGRESS PAYMENT :**

..

**WORK START DATE :**

14/09/2021

**WORK FINISH DATE :**

..



**MOGADISHU – DAHAB TOWER**



**MOGADISHU – DAHAB TOWER**



**MOGADISHU – DAHAB TOWER**



**MOGADISHU – DAHAB TOWER**

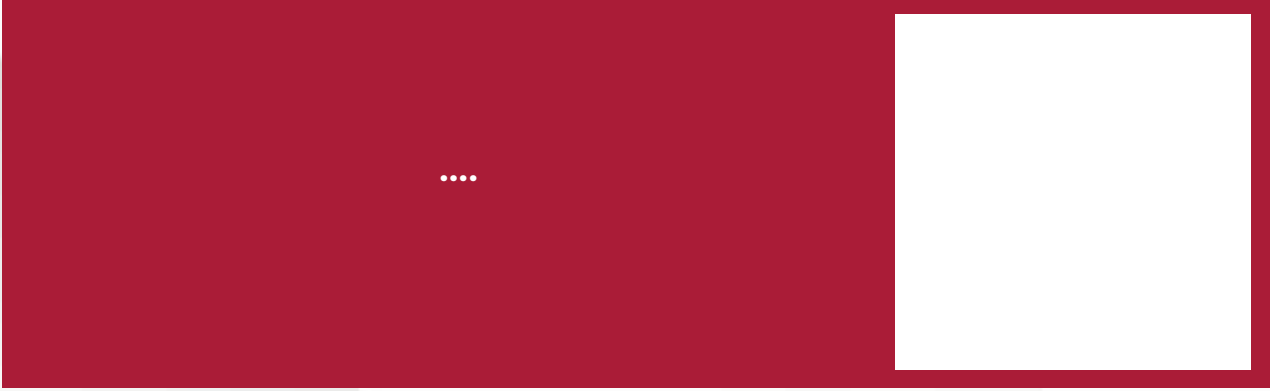


**MOGADISHU – DAHAB TOWER**



**MOGADISHU – DAHAB TOWER**



**ADMINISTRATION :**

UNİGATE LOGİSTİCS

**CONTRACTOR :**

EKİP İNŞAAT ENERJİ ELEKTRİK MEK. SAN. VE TİC. LTD. ŞTİ.

**SUBCONTRACTOR :**

..

**CONTRACT PRICE :**

740.000 \$

**TOTAL PROGRESS PAYMENT :**

..

**WORK START DATE :**

..

**WORK FINISH DATE :**

..



MOGADISHU – UNIGATE



**MOGADISHU- UNIGATE**



For more information;

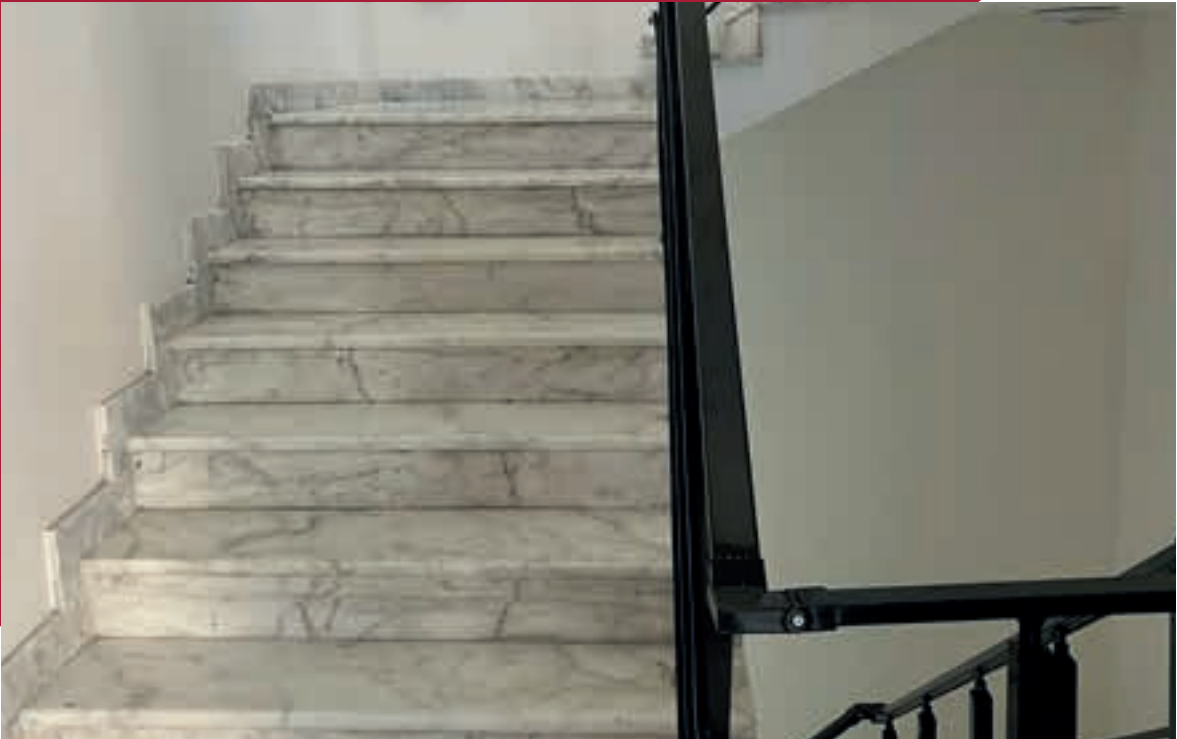


[www.ekipenerji.com.tr](http://www.ekipenerji.com.tr)

MOGADISHU- UNIGATE



**MOGADISHU- UNIGATE**



## WORKS REALIZED BY EKIP CONSTRUCTION ENERGY ELEKTRİK MEKANİKAL İNŞAAT VE TİCARET LİMİTED ŞİRKETİ

NUMBER	PROJECT NAME	PROJECT START DATE	PROJECT FINISH DATE	TENDER AUTHORITY	CONTRACT PRICE (TL)	TOTAL CONTRACT PRICE DONE	JUNE 2022 CONVERSION RATE	USD PRICE	CONSTRUCTION STATUS
1	ASPHALT PAVE COMPACTION AND TRANSPORT WORK	15.11.2005	15.12.2005	BÜYÜKÇEKİRMECE MUNICIPALITY	94.900,00 YTL + KDV	94.259,79 YTL + KDV	1.174.650,60 TL + KDV	69.097,09 USD + KDV	100%
2	ASPHALT PAVE COMPACTION AND TRANSPORT WORK	21.04.2006	21.12.2006	BÜYÜKÇEKİRMECE MUNICIPALITY	497.500,00 YTL + KDV	554.467,33 YTL + KDV	6.914.137,03 TL + KDV	406.715,94 USD + KDV	100%
3	BORDER TRACK CONSTRUCTION WORK ON VARIOUS STREETS AND STREETS	23.05.2006	27.12.2006	BÜYÜKÇEKİRMECE MUNICIPALITY	422.503,00 YTL + KDV	493.284,94 YTL + KDV	5.281.748,11 TL + KDV	310.691,06 USD + KDV	100%
4	TURGUT ÖZAL BULVARI COMBINED STONE, BORDERS SURFACE CONSTRUCTION WORK	17.07.2006	31.12.2006	BÜYÜKÇEKİRMECE MUNICIPALITY	197.178,23 YTL + KDV	230.565,25 YTL + KDV	2.638.359,79 TL + KDV	155.197,63 USD + KDV	100%
5	STONE WALL CONSTRUCTION	15.11.2006	27.11.2006	BÜYÜKÇEKİRMECE MUNICIPALITY	199.777,39 YTL + KDV	228.087,05 YTL + KDV	2.601.348,52 TL + KDV	153.020,50 USD + KDV	100%
6	AŞIK VEYSEL & BİLGE STREET PALLET STONE CURB AND RAIN PULSE CONSTRUCTION WORK	16.11.2006	14.12.2007	BÜYÜKÇEKİRMECE MUNICIPALITY	104.750,00 YTL + KDV	125.559,76 YTL + KDV	1.432.017,71 TL + KDV	84.236,33 USD + KDV	100%
7	II. ZONE MÜHTELF CAD. SOK. COMBINED CURB RAIN GUTTER CONSTRUCTION WORK	7.06.2007	24.09.2007	BÜYÜKÇEKİRMECE MUNICIPALITY	104.873,10 YTL + KDV	121.705,3 YTL + KDV	1.353.552,85 TL + KDV	79.620,75 USD + KDV	100%
8	MERVE STREET LANDSCAPE APPLICATION CONSTRUCTION WORK	14.06.2007	14.12.2007	BÜYÜKÇEKİRMECE MUNICIPALITY	131.281,52 YTL + KDV	104.795,95 YTL + KDV	1.164.239,89 TL + KDV	68.484,69 USD + KDV	100%
9	SERVICE BUILDINGS MAINTENANCE REPAIR CONSTRUCTION WORK	21.03.2008	24.02.2008	BÜYÜKÇEKİRMECE MUNICIPALITY	99.979,21 YTL + KDV	95.122,17 YTL + KDV	998.440,99 TL + KDV	58.731,82 USD + KDV	100%
10	SERVICE BUILDINGS MAINTENANCE REPAIR CONSTRUCTION WORK	21.03.2007	20.01.2008	BÜYÜKÇEKİRMECE MUNICIPALITY	219.910,30 YTL + KDV	263.560,13 YTL + KDV	2.496.321,36 TL + KDV	146.842,43 USD + KDV	100%
11	SERVICE BUILDINGS MAINTENANCE REPAIR CONSTRUCTION WORK	1.06.2008	31.12.2008	BÜYÜKÇEKİRMECE MUNICIPALITY	215.499,00 YTL + KDV	257.759,77 YTL + KDV	2.457.441,04 TL + KDV	144.555,35 USD + KDV	100%
12	DECORATIVE WALL CONSTRUCTION WORK	12.11.2007	15.12.2008	BÜYÜKÇEKİRMECE MUNICIPALITY	677.500,00 YTL + KDV	672.199,46 YTL + KDV	7.467.859,09 TL + KDV	439.285,82 USD + KDV	100%
13	DİLEK STREET , AKASYA STREET , SIDEWALK CONSTRUCTION WORK	21.03.2008	4.12.2008	BÜYÜKÇEKİRMECE MUNICIPALITY	76.674,50 YTL + KDV	65.225,78 YTL + KDV	684.636,29 TL + KDV	40.272,72 USD + KDV	100%
14	ASPHALT PAVE COMPACTION AND TRANSPORT WORK	23.10.2008	15.09.2008	BÜYÜKÇEKİRMECE MUNICIPALITY	262.500,00 YTL + KDV	212.506,02 YTL + KDV	2.060.774,57 TL + KDV	121.222,03 USD + KDV	100%
15	TURGUT ÖZAL BULVARI COMBINED STONE, BORDERS SURFACE CONSTRUCTION WORK	21.03.2008	10.06.2008	BÜYÜKÇEKİRMECE MUNICIPALITY	116.524,20 YTL + KDV	110.461,63 YTL + KDV	1.159.450,15 TL + KDV	68.202,95 USD + KDV	100%
16	NASRETTİN HOCA STREET SIDEWALK CONSTRUCTION WORK	21.03.2008	5.09.2008	BÜYÜKÇEKİRMECE MUNICIPALITY	96.959,00 YTL + KDV	115.490,86 YTL + KDV	1.212.238,99 TL + KDV	71.308,17 USD + KDV	100%
17	COMBINED PAVEMENT CONSTRUCTION WORK	26.03.2007	31.12.2007	SILIVRI MUNICIPALITY	464.135,00 YTL + KDV	495.000,00 YTL + KDV	5.619.014,08 TL + KDV	330.530,24 USD + KDV	100%
18	SAADETİBERE NEIGHBORHOOD PARK CONSTRUCTION WORK	18.07.2006	31.12.2006	ESENYURT MUNICIPALITY	250.000,00 YTL + KDV	250.000,00 YTL + KDV	2.860.751,77 TL + KDV	168.279,51 USD + KDV	100%
19	LANDSCAPING CONSTRUCTION WORK OF MAHİMETBEY ANIMAL SHELTER	13.02.2007	34/05/2007	BAGCIAR MUNICIPALITY	420.000,00 YTL + KDV	410.000,00 YTL + KDV	4.698.231,55 TL + KDV	276.366,56 USD + KDV	100%
20	AVCIILAR METROBUS LINE ROAD WORK	1.09.2007	30.10.2007	İ.B.B. - KALYON CONS.	250.000,00 YTL + KDV	230.000,00 YTL + KDV	2.534.650,10 TL + KDV	149.097,06 USD + KDV	100%
21	PENDİK DOLAYOBA GYM COMPLEX	1.06.2006	37/07/2007	KIPTAŞ A.Ş. - ÖZKA CONS.	450.000,00 YTL + KDV	492.000,00 YTL + KDV	5.856.370,01 TL + KDV	344.492,35 USD + KDV	100%
22	KIPTAŞ - TUZLA 1ST STAGE HİAL HOUSINGS 22 BLOCK 576 FLATS ROUGH+ FINE CONSTRUCTION, 4 BLOCK 132 FLATS ROUGH CONSTRUCTION WORK	18.04.2006	30.10.2007	KIPTAŞ A.Ş. - BEMA CONS.	14.546.000,00 YTL + KDV	15.545.000,00 YTL + KDV	193.844.171,50 TL + KDV	11.402.598,32 USD + KDV	100%
23	KIPTAŞ - TUZLA 2nd PHASE 11 BLOCK 528 FLAT ROUGH CONSTRUCTION CONSTRUCTION WORK	26.04.2006	28.08.2007	KIPTAŞ A.Ş. - DEMARS CONS.	1.250.000,00 YTL + KDV	1.325.000,00 YTL + KDV	14.895.521,06 TL + KDV	876.207,12 USD + KDV	100%
24	TUZLA B BLOCKS ROUGH CONSTRUCTION 1ST STAGE	15.02.2007	31.05.2007	KIPTAŞ A.Ş. - BEMA CONS.	514.000,00 YTL + KDV	600.000,00 YTL + KDV	6.875.460,80 TL + KDV	404.438,87 USD + KDV	100%
25	KIPTAŞ - ARNAVUTKÖY 341 HOUSING CONSTRUCTION	16.05.2007	30.11.2009	KIPTAŞ A.Ş. - YÜZBAŞIOĞLU CONS.	12.796.000,00 YTL + KDV	12.796.000,00 YTL + KDV	142.711.354,18 TL + KDV	8.394.785,54 USD + KDV	100%
26	KIPTAŞ - KAYABAŞI 3 BLOCK 180 FLAT BAŞAK MASS HOUSING ROUGH CONSTRUCTION CONSTRUCTION	3.03.2008	31.12.2008	KIPTAŞ A.Ş. - UZUNLAR CONS.	1.200.000,00 YTL + KDV	1.200.000,00 YTL + KDV	12.595.687,55 TL + KDV	740.922,80 USD + KDV	100%
27	AKOP ALUMİNYUM SİTE NATURAL GAS INSTALLATION CONSTRUCTION WORK	30.04.2008	31.07.2008	S.S. İST. ALIUM. KOOP.	297.836,90 YTL + KDV	297.836,90 YTL + KDV	3.030.063,75 TL + KDV	178.239,04 USD + KDV	100%
28	BEYAŞ MASS HOUSING 5 BLOCK 200 FLATS ROUGH+ FINE CONSTRUCTION WORK	6.07.2008		BEYLİKDUZU MUNICIPALITY	15.190.365,99 YTL + KDV	3.064.452,00 YTL + KDV	144.190.365,99 TL + KDV	8.481.786,23 USD + KDV	100%
29	GİY-KOOP 2083 DETACHED WORKPLACES	15.06.1994	5.11.1999	S.S. İSTANBUL CLOTHING MANUFACTURING AND WHOLESALE BUILDING COOPERATIVE	405.500,00 YTL + KDV	709.625,00 YTL + KDV	807.725.488.419,12 TL + KDV	47.513.261.083,47 USD + KDV	100%
30	MULTI-STOREY BUSINESS CENTER AND HOTEL FACILITIES	25.04.1996	25.05.2001	S.S. İSTANBUL CLOTHING MANUFACTURING AND WHOLESALE BUILDING COOPERATIVE	310.000,00 YTL + KDV	204.075,25 YTL + KDV	82.698.280,56 TL + KDV	4.864.604,73 USD + KDV	100%
31	KIPTAŞ ARNAVUTKÖY 341 AD. HOUSING ROUGH CONSTRUCTION	16.05.2007	31.12.2007	KIPTAŞ İSTANBUL MASS HOUSING ZONING PLAN - YÜZBAŞIOĞLU CONS.	4.200.830,00 YTL + KDV	4.643.878,13 YTL + KDV	51.792.289,51 TL + KDV	3.046.605,26 USD + KDV	100%



# EKİP

**EKİP İNŞAAT ENERJİ ELEKTRİK MEKANİK SAN. ve TİC. LTD. ŞTİ.**

☎ 0 (212) 438 19 80  
🌐 [www.ekipenerji.com.tr](http://www.ekipenerji.com.tr)  
✉ [info@ekipenerji.com.tr](mailto:info@ekipenerji.com.tr)

📍 Oruç Reis Mahallesi Barbaros Caddesi D:7  
B:63 No:9/18A Esenler - İSTANBUL / TÜRKİYE  
**Vergi Dairesi:** Atışalanı **Tic Sicil No:** 568860  
[www.ekipenerji.com.tr](http://www.ekipenerji.com.tr)